

FLORIDA DEPARTMENT OF
Business & Professional Regulation



[DBPR HOME](#) | [ABOUT DBPR](#) | [DBPR DIVISIONS](#) | [CONTACT DBPR](#)

[BCIS Home](#) | [Log In](#) | [User Registration](#) | [Hot Topics](#) | [Submit Surcharge](#) | [Stats & Facts](#) | [Publications](#) | [Contact Us](#) | [BCIS Site Map](#) | [Links](#) | [Search](#)



Product Approval
USER: Public User

[Product Approval Menu](#) > [Product or Application Search](#) > [Application List](#) > **Application Detail**

► OFFICE OF THE
SECRETARY

FL #	FL12019-R9						
Application Type	Revision						
Code Version	2020						
Application Status	Approved						
Comments							
Archived	<input type="checkbox"/>						
Product Manufacturer	American Construction Metals						
Address/Phone/Email	6938 N US Highway 41 Apollo Beach, FL 33572 (813) 671-4006 Gary.Zigler@acm-metals.com						
Authorized Signature	Vivian Wright rickw@rwbldgconsultants.com						
Technical Representative							
Address/Phone/Email							
Quality Assurance Representative							
Address/Phone/Email							
Category	Panel Walls						
Subcategory	Soffits						
Compliance Method	Evaluation Report from a Florida Registered Architect or a Licensed Florida Professional Engineer <input type="checkbox"/> Evaluation Report - Hardcopy Received						
Florida Engineer or Architect Name who developed the Evaluation Report	Lyndon F. Schmidt, P.E.						
Florida License	PE-43409						
Quality Assurance Entity	Keystone Certifications, Inc.						
Quality Assurance Contract Expiration Date	03/02/2030						
Validated By	Ryan J. King, P.E. <input checked="" type="checkbox"/> Validation Checklist - Hardcopy Received						
Certificate of Independence	FL12019_R9_COI_(c)_Certificate of Independence.pdf						
Referenced Standard and Year (of Standard)	<table border="0"> <tr> <td><u>Standard</u></td> <td><u>Year</u></td> </tr> <tr> <td>ASTM E330</td> <td>2002</td> </tr> <tr> <td>ASTM E330</td> <td>2014</td> </tr> </table>	<u>Standard</u>	<u>Year</u>	ASTM E330	2002	ASTM E330	2014
<u>Standard</u>	<u>Year</u>						
ASTM E330	2002						
ASTM E330	2014						
Equivalence of Product Standards Certified By							
Sections from the Code							
Product Approval Method	Method 1 Option D						

Date Submitted	10/06/2020
Date Validated	10/06/2020
Date Pending FBC Approval	10/19/2020
Date Approved	12/15/2020

Summary of Products

FL #	Model, Number or Name	Description
12019.1	a. "Triple 4" and "Quad 4"	Aluminum "V - Groove" Soffit - Full Vent, Center Vent and Opaque
Limits of Use Approved for use in HVHZ: No Approved for use outside HVHZ: Yes Impact Resistant: N/A Design Pressure: N/A Other: See INST 12019.1 for Design Pressure Ratings by specific application and for any other additional use limitations and installation instructions.		Installation Instructions FL12019_R9_II_(d)_Inst 12019.1.pdf Verified By: Lyndon F. Schmidt, P.E. 43409 Created by Independent Third Party: Yes Evaluation Reports FL12019_R9_AE_(d)_Eval 12019.1.pdf Created by Independent Third Party: Yes
12019.2	b. "Triple 4" and "Quad 4"	Aluminum "U - Groove" Soffit - Full Vent, Center Vent and Opaque
Limits of Use Approved for use in HVHZ: No Approved for use outside HVHZ: Yes Impact Resistant: N/A Design Pressure: N/A Other: See INST 12019.2 for Design Pressure Ratings by specific application and for any other additional use limitations and installation instructions.		Installation Instructions FL12019_R9_II_(d)_Inst 12019.2.pdf Verified By: Lyndon F. Schmidt, P.E. 43409 Created by Independent Third Party: Yes Evaluation Reports FL12019_R9_AE_(d)_Eval 12019.2.pdf Created by Independent Third Party: Yes

[Back](#)
[Next](#)

[Contact Us](#) :: 2601 Blair Stone Road, Tallahassee FL 32399 Phone: 850-487-1824

The State of Florida is an AA/EEO employer. [Copyright 2007-2013 State of Florida.](#) :: [Privacy Statement](#) :: [Accessibility Statement](#) :: [Refund Statement](#)

Under Florida law, email addresses are public records. If you do not want your e-mail address released in response to a public-records request, do not send electronic mail to this entity. Instead, contact the office by phone or by traditional mail. If you have any questions, please contact 850.487.1395. *Pursuant to Section 455.275(1), Florida Statutes, effective October 1, 2012, licensees licensed under Chapter 455, F.S. must provide the Department with an email address if they have one. The emails provided may be used for official communication with the licensee. However email addresses are public record. If you do not wish to supply a personal address, please provide the Department with an email address which can be made available to the public. To determine if you are a licensee under Chapter 455, F.S., please click [here](#).

Product Approval Accepts:

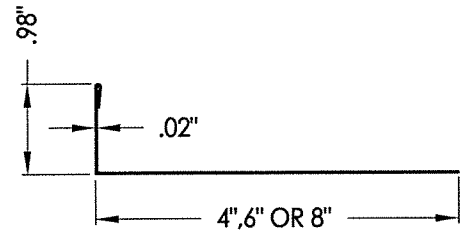


R:\Clients\American Construction Metals PERMANENT\A - Florida Product Approvals\FL-12019\2020\FL-12019.1.dwg, 1-2

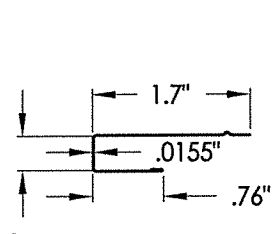
This one
→

SOFFIT AIR FLOW TABLE									
SOFFIT TYPE		AIR FLOW			SOFFIT TYPE		AIR FLOW		
		FREE FLOW AREA (in²/ft²)	FREE FLOW AREA (in²/linear ft)	% FREE FLOW AREA			FREE FLOW AREA (in²/ft²)	FREE FLOW AREA (in²/linear ft)	% FREE FLOW AREA
TRIPLE 4	CENTER VENT NARROW PATTERN	3.91	3.91*	2.71 %	QUAD 4				
	FULL VENT NARROW PATTERN	11.74	11.74*	8.15 %		FULL VENT NARROW PATTERN	11.74	15.61*	8.15 %
	FULL VENT WIDE PATTERN	3.69	3.69*	2.56 %		FULL VENT WIDE PATTERN	3.69	4.91*	2.56 %

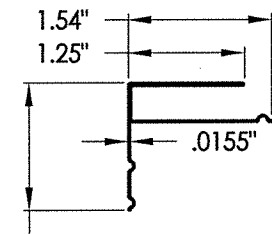
* FREE FLOW AREA IS PER LINEAR FOOT OF OVERHANG (SPAN "A" ON SHEETS 3, 4 & 5)
PER PANEL (12" TRIPLE 4 PANEL OR 16" QUAD 4 PANEL)



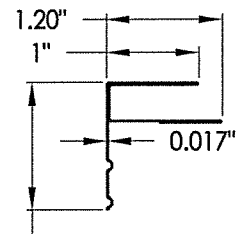
1 FASCIA
Aluminum



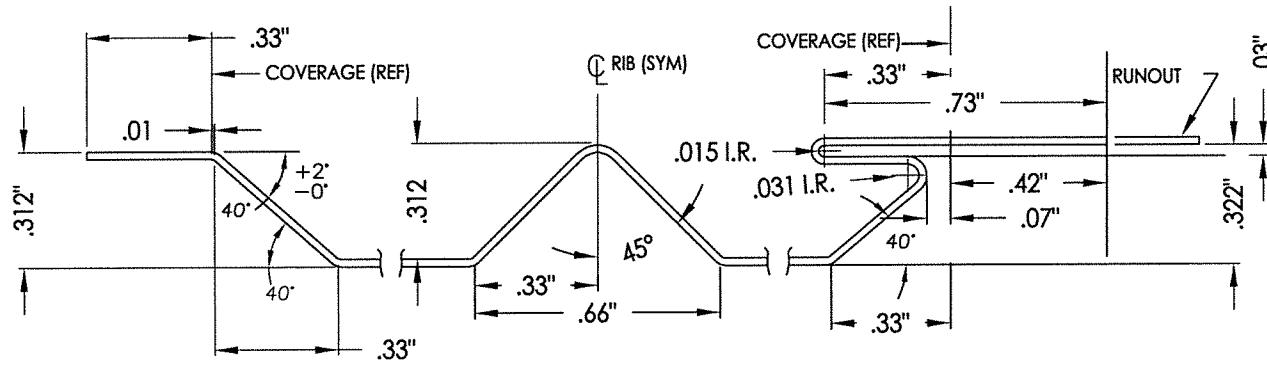
2 "J" CHANNEL
Aluminum



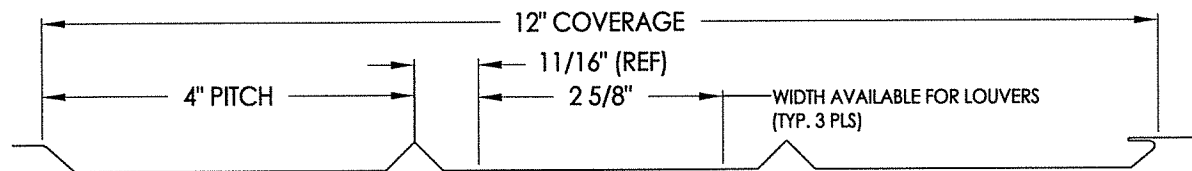
3 "F" CHANNEL
Aluminum



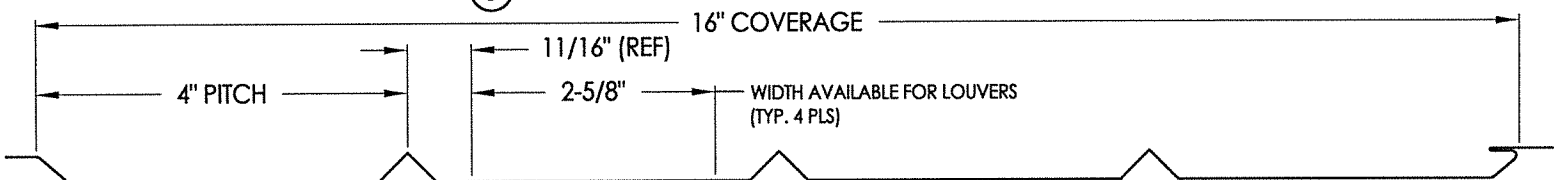
3A "F" CHANNEL
Aluminum



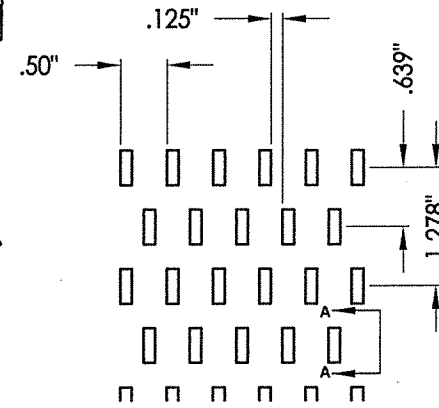
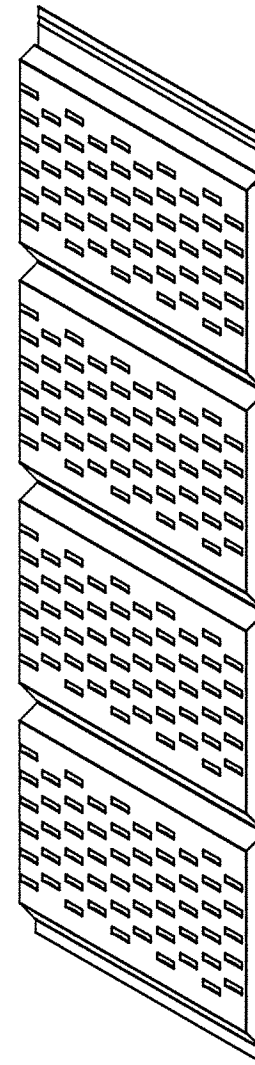
RIB AND END DETAILS



6 TRIPLE 4 PANEL



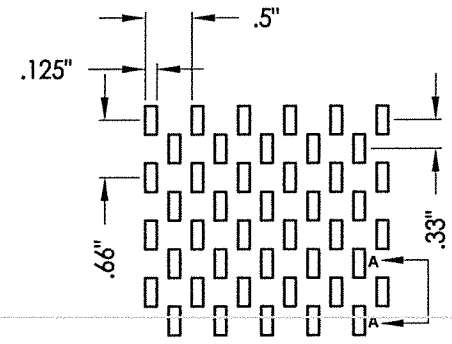
5 QUAD 4 PANEL



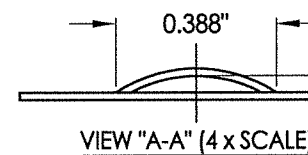
LOUVER PATTERN (FULL SCALE)
(LOUVERS FORMED IN SAME DIRECTION AS RIBS)

VIEW "A-A" (4 x SCALE)

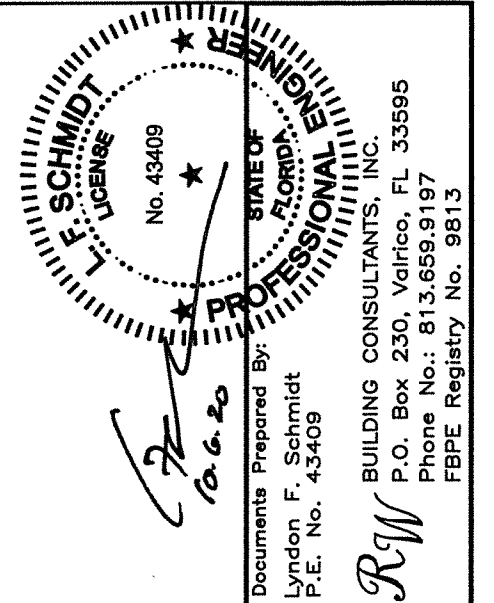
5 6 FULL VENT - WIDE PATTERN
(Louvers formed in same direction as ribs)



LOUVER PATTERN
(LOUVERS FORMED IN SAME DIRECTION AS RIBS)



5 6 FULL VENT - NARROW VENT PATTERN
(Louvers formed in same direction as ribs)



Documents Prepared By:
Lyndon F. Schmidt
P.E. No. 43409

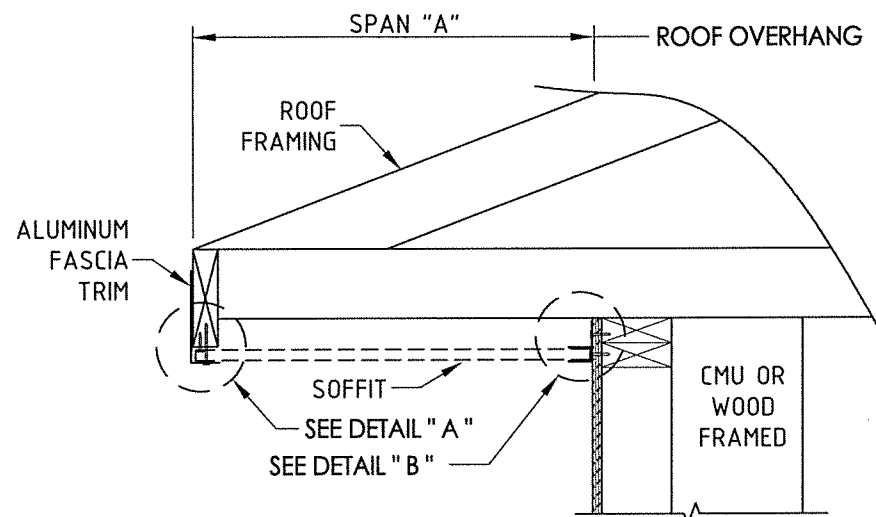
RW BUILDING CONSULTANTS, INC.
P.O. Box 230, Valrico, FL 33595
Phone No.: 813.659.9197
FBPE Registry No. 9813

PRODUCT:
ALUMINUM SOFFIT
PART OR ASSEMBLY:
PANEL DETAILS

NO.	DATE	REVISIONS
7	10/01/20	UPDATE TO 7TH ED. (2020) FBC
6	03/19/20	ADD ALTERNATE "F" CHANNEL
5	01/01/09	UPDATE TO 6TH ED. (2017) FBC
4	03/02/15	UPDATE TO 5TH ED. (2014) FBC
3	12/13/11	UPDATE FOR 2010 FBC

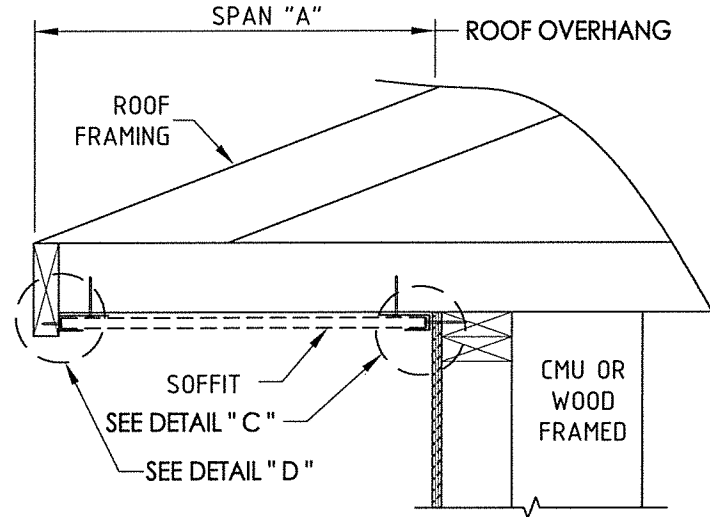
DATE: 01/01/09
SCALE: N.T.S.
DWG. BY: JK
CHK. BY: LFS
DRAWING NO.: FL-12019.1
SHEET 2 OF 5

R:\Clients\American Construction Metals PERMANENT\A - Florida Product Approvals\FL-12019\C - Drawings\FL-12019 (2020)\FL-12019.1.dwg, 1-3



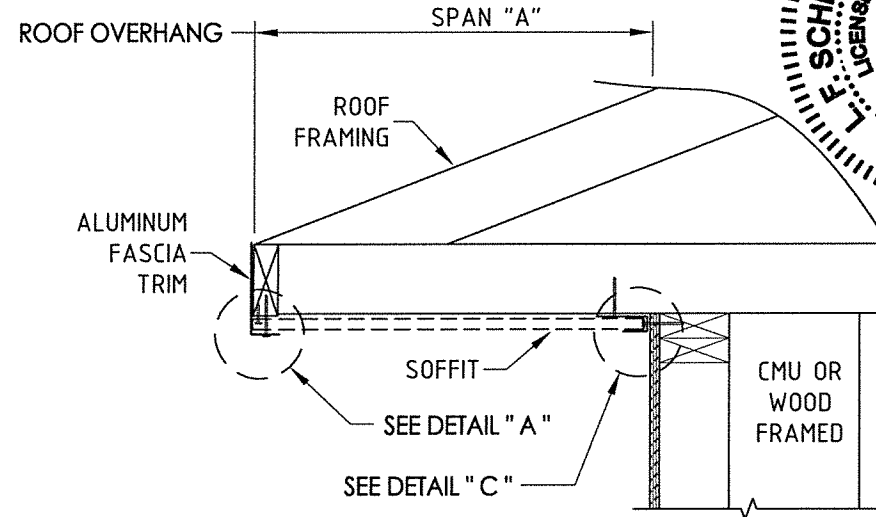
SIDE VIEW - SINGLE SPAN w/F-CHANNEL

(Shown w/ truss/framing cantilever)



SIDE VIEW - SINGLE SPAN w/J-CHANNELS

(Shown w/ truss/framing cantilever)

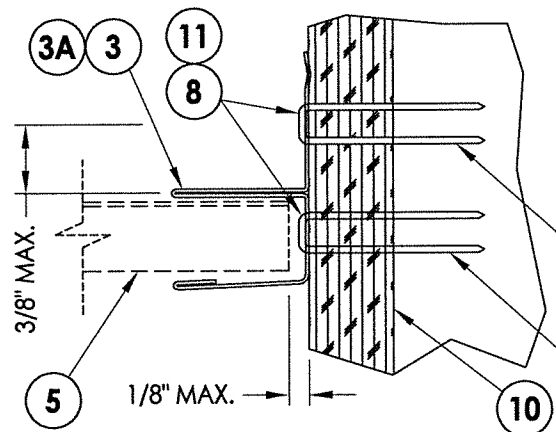


SIDE VIEW - SINGLE SPAN w/J-CHANNEL

(Shown w/ truss/framing cantilever)

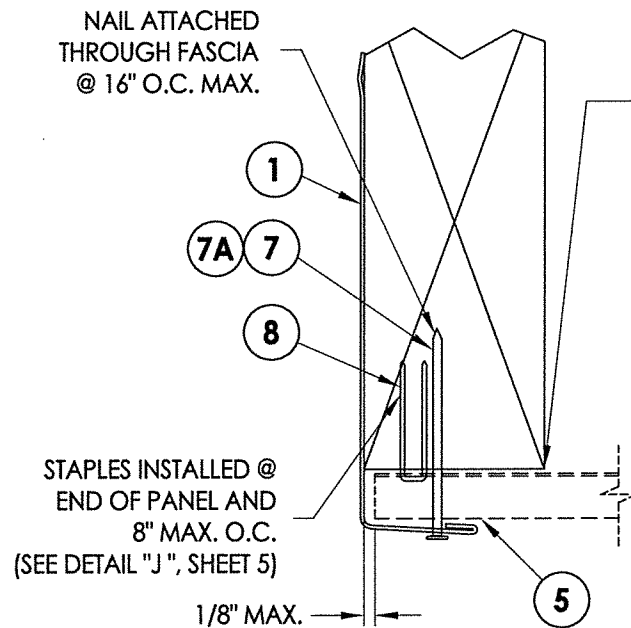
SINGLE SPAN LENGTH "A"	DESIGN PRESSURE (PSF)	
	POSITIVE	NEGATIVE
8"	+70.0	-141.0
10"	+60.0	-60.0
12"	+50.0	-50.0
14"	+38.5	-38.5
16"	+30.0	-30.0

NOTE: WOOD FRAMING AND CONNECTIONS TO BE DESIGNED BY THE ARCHITECT OR ENGINEER OF RECORD



DETAIL "B"

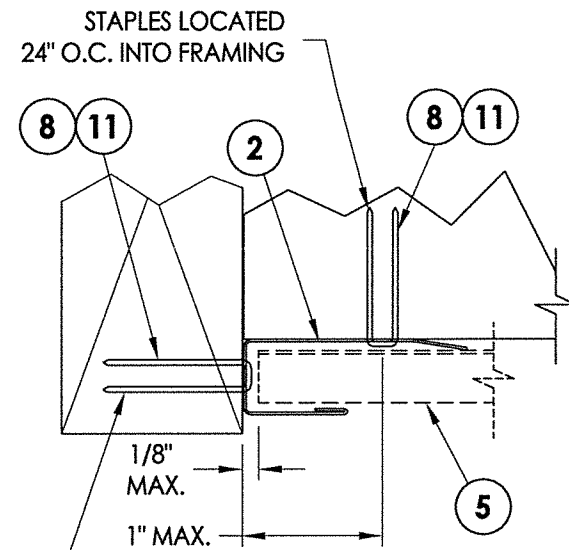
F-Channel



DETAIL "A"

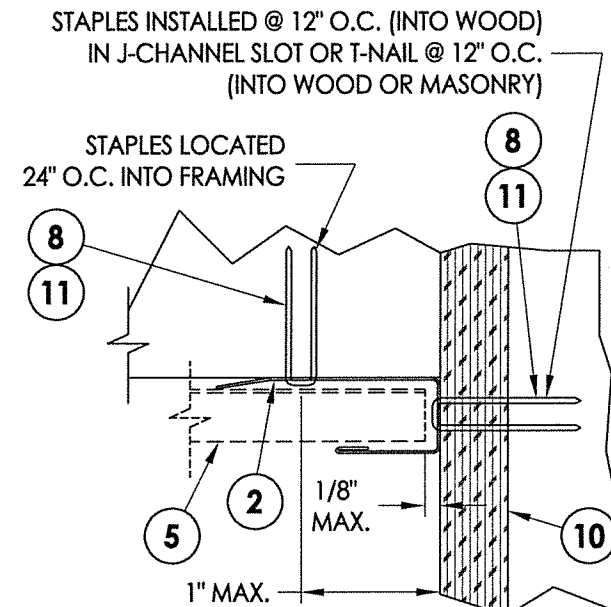
Fascia

NOTE:
FOR SQUARE CUT OVERHANG,
TRIM BOTTOM OF FASCIA FLAT
AGAINST PANEL



DETAIL "D"

J-Channel
Fascia

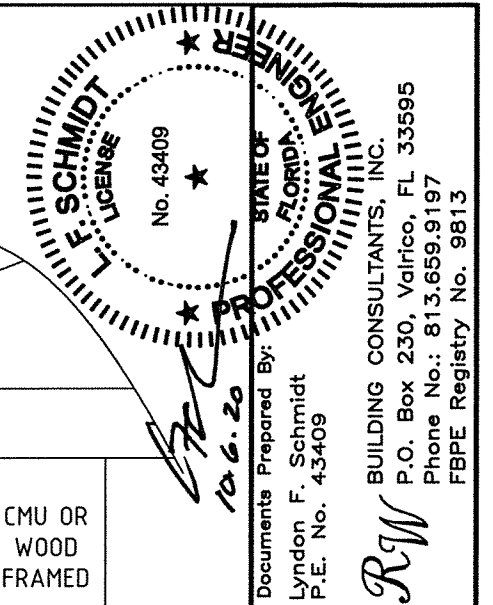


DETAIL "C"

J-Channel

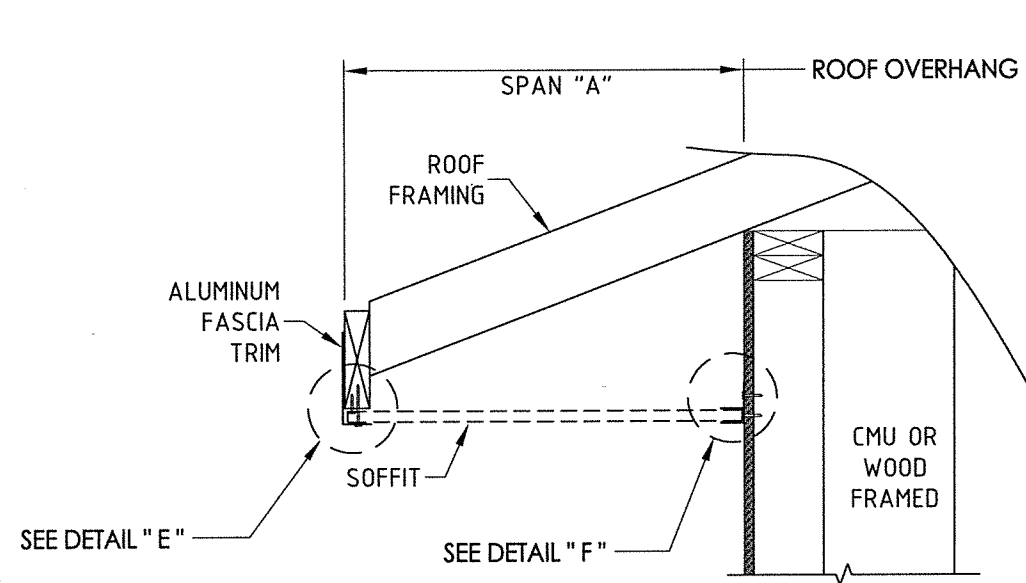
SUBSTRATE NOTES:

- WOOD SUBSTRATE: G = 0.42 OR BETTER
- MASONRY SUBSTRATE: 3,000 PSI CONCRETE (ACI 301) OR HOLLOW BLOCK (ASTM C90).



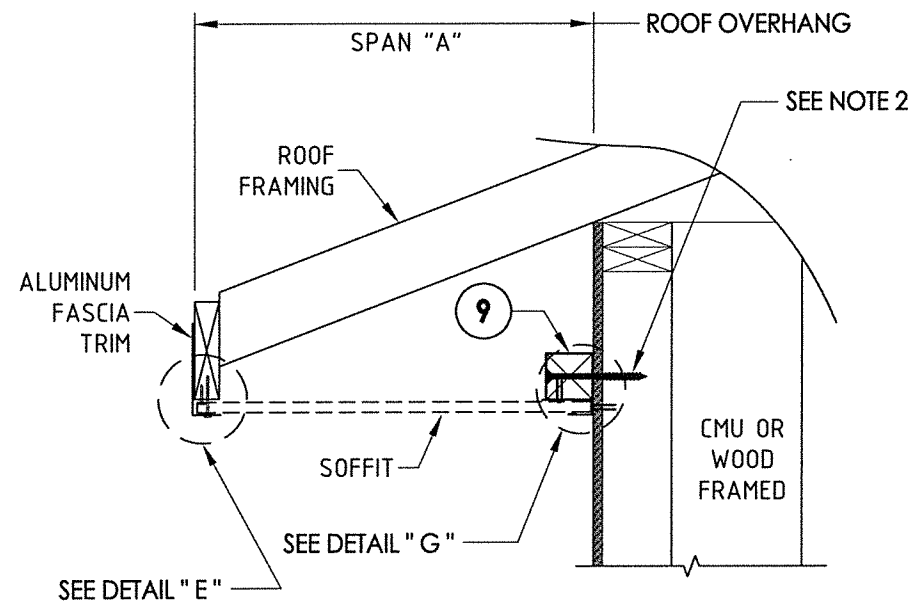
Documents Prepared By: Lyndon F. Schmidt P.E. No. 43409		STATE OF FLORIDA PROFESSIONAL ENGINEER No. 43409		BUILDING CONSULTANTS, INC. P.O. Box 230, Valrico, FL 33595 Phone No.: 813.659.9197 FBPE Registry No. 9813	
PRODUCT: ALUMINUM SOFFIT		PART OR ASSEMBLY: SOFFIT DETAILS & DESIGN PRESSURES		REVISIONS	
7	10/01/20	UPDATE TO 7TH ED. (2020) FBC	LFS	NO.	DATE
6	03/19/20	ADD ALTERNATE "F" CHANNEL	LFS		
5	01/01/09	UPDATE TO 6TH ED. (2017) FBC	LFS		
4	03/02/15	UPDATE TO 5TH ED. (2014) FBC	JK		
3	12/13/11	UPDATE FOR 2010 FBC	LFS		
DATE: 1/9/09					
SCALE: N.T.S.					
DWG. BY: JK					
CHK. BY: LFS					
DRAWING NO.: FL-12019.1					
SHEET 3 OF 5					

R:\Clients\American Construction Metals PERMANENT\A - Florida Product Approvals\FL-12019\A - Drawings\FL-12019.1.dwg, 1-4



SIDE VIEW - SINGLE SPAN w/F-CHANNEL

(Shown w/ truss/framing overhang)



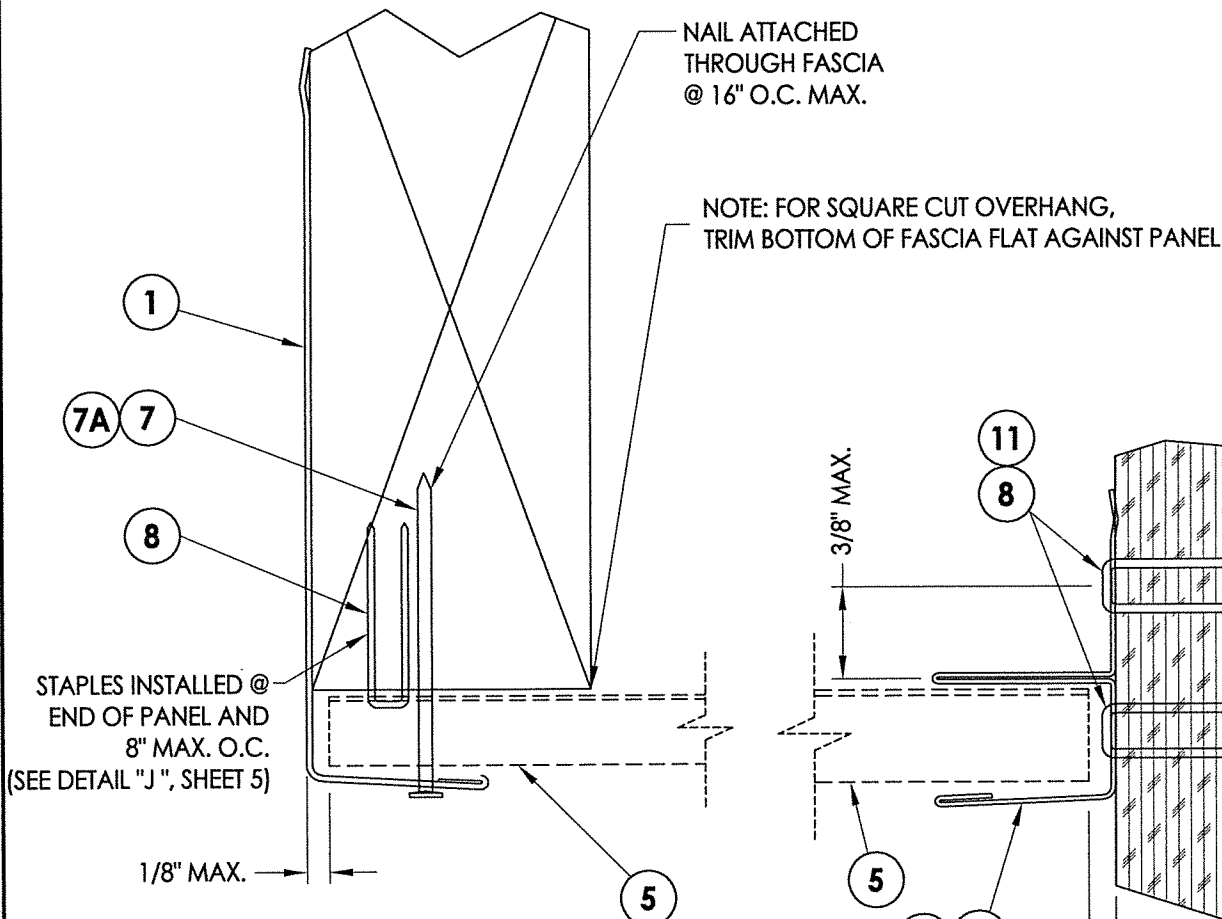
SIDE VIEW - SINGLE SPAN w/J-CHANNEL

(Shown w/ truss/framing overhang)

CONNECTOR NOTES:

1. WOOD FRAMING AND CONNECTIONS TO BE DESIGNED BY THE ARCHITECT OR ENGINEER OF RECORD
2. 12d COMMON NAIL OR 3/16" ITW TAPCON CONCRETE SCREW (MIN. 1-1/4" EMBEDMENT) @ 24" ON CENTER

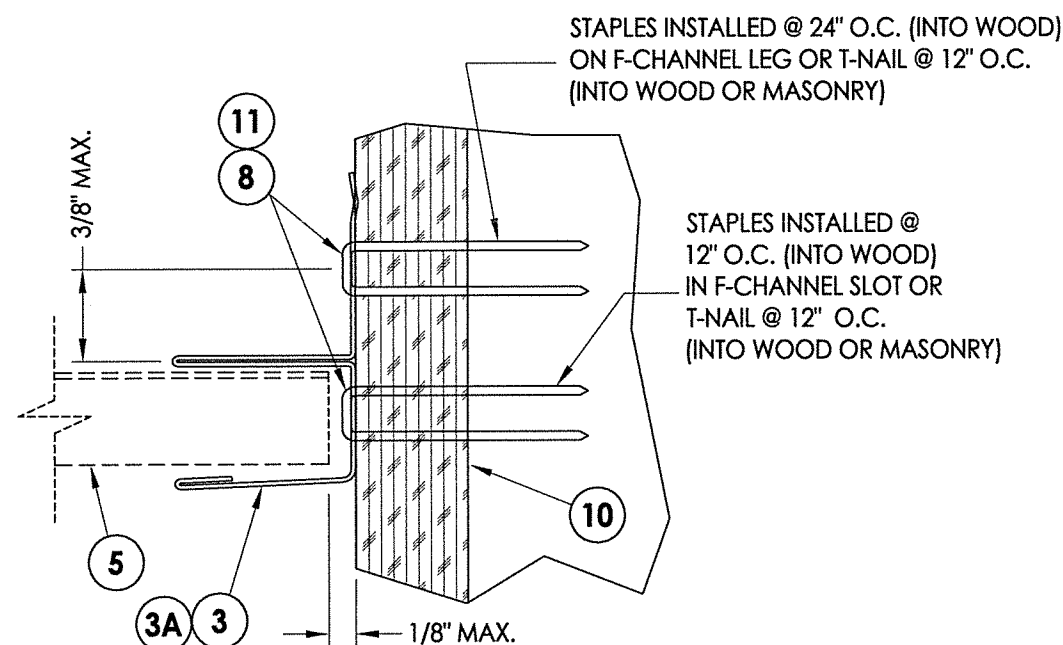
SINGLE SPAN LENGTH "A"	DESIGN PRESSURE (PSF)	
	POSITIVE	NEGATIVE
8"	+70.0	-141.0
10"	+60.0	-60.0
12"	+50.0	-50.0
14"	+38.5	-38.5
16"	+30.0	-30.0



DETAIL "E"

Fascia

NOTE: FOR SQUARE CUT OVERHANG,
TRIM BOTTOM OF FASCIA FLAT AGAINST PANEL

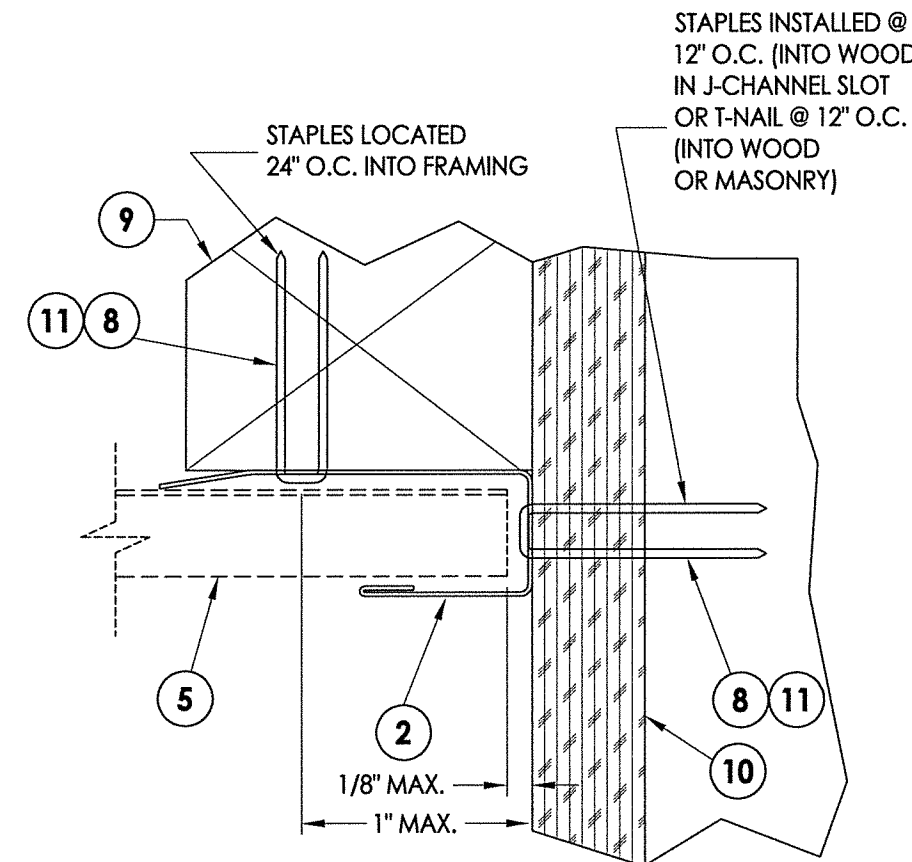


DETAIL "F"

F-Channel

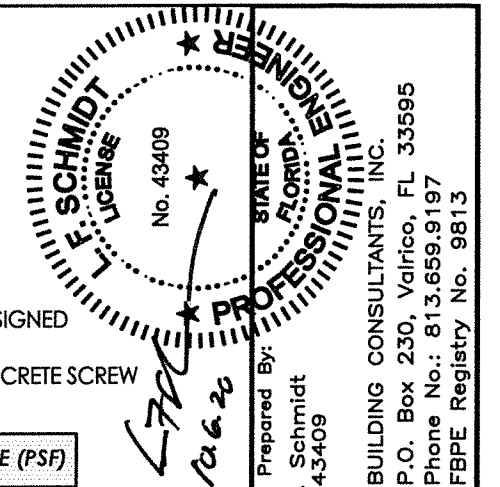
SUBSTRATE NOTES:

1. WOOD SUBSTRATE: G = 0.42 OR BETTER
2. MASONRY SUBSTRATE: 3,000 PSI CONCRETE (ACI 301) OR HOLLOW BLOCK (ASTM C90).



DETAIL "G"

J-Channel



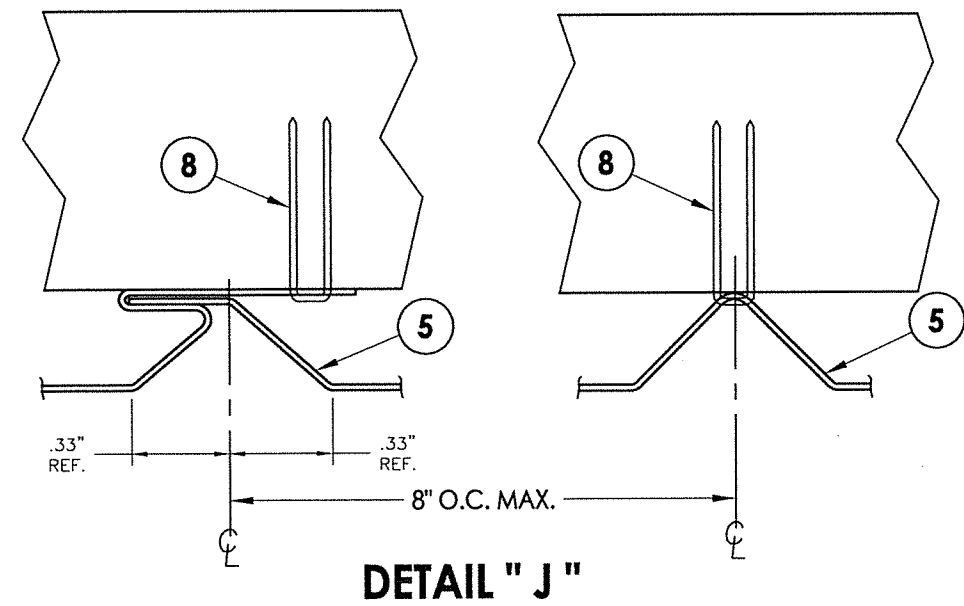
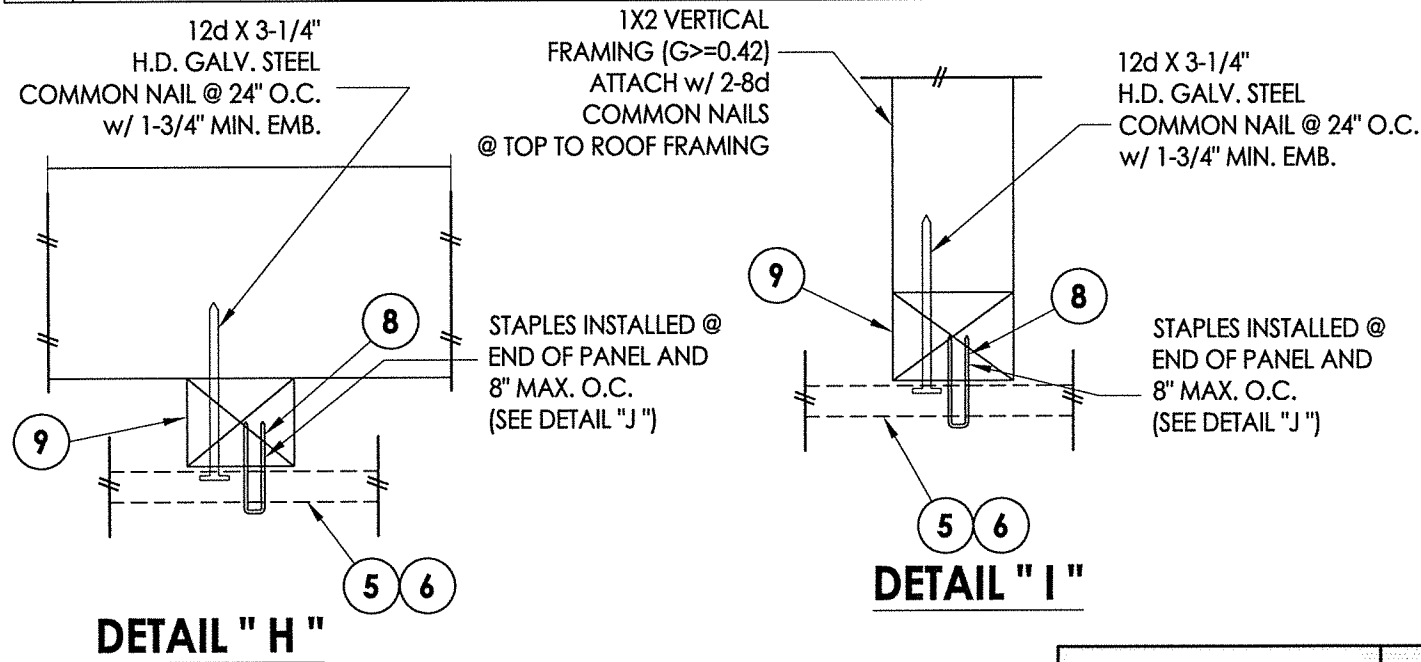
Documents Prepared By:
Lyndon F. Schmidt
P.E. No. 43409

R.W.
BUILDING CONSULTANTS, INC.
P.O. Box 230, Valrico, FL 33595
Phone No.: 813.659.9197
FBPE Registry No. 9813

PRODUCT:		ALUMINUM SOFFIT		PART OR ASSEMBLY:		SOFFIT DETAILS & DESIGN PRESSURES	
7	10/01/20	UPDATE TO 7TH ED. (2020) FBC	LFS				
6	03/19/20	ADD ALTERNATE "F" CHANNEL	LFS				
5	01/01/09	UPDATE TO 6TH ED. (2017) FBC	LFS				
4	03/02/15	UPDATE TO 5TH ED. (2014) FBC	JK				
3	12/13/11	UPDATE FOR 2010 FBC	LFS				
NO.		DATE		REVISIONS			
DATE:		1/9/09					
SCALE:		N.T.S.					
DWG. BY:		JK					
CHK. BY:		LFS					
DRAWING NO.:		FL-12019.1					
SHEET		4	OF	5			

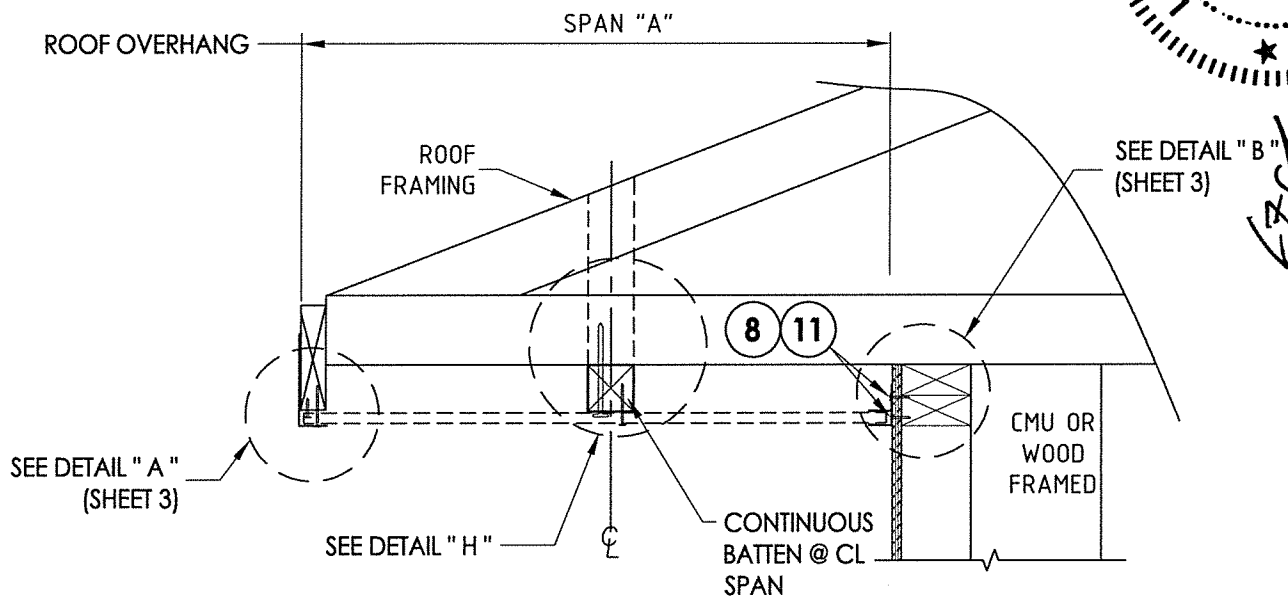
R:\Clients\American Construction Metals PERMANENT\A - Florida Product Approvals\FL-12019\C - Drawings\FL-12019 (2020)\FL-12019.1.dwg, 1-5

ITEM	DESCRIPTION	MATERIAL
1	FASCIA (0.0215" THK.) ALUM. 3105 - H14	ALUMINUM
2	"J" CHANNEL (0.0155" THK.) ALUM. 3105 - H24	ALUMINUM
3	"F" CHANNEL (0.0155" THK.) ALUM. 3104 - H19	ALUMINUM
3A	"F" CHANNEL (0.0170" THK.) ALUM. 3104 - H19	ALUMINUM
5	QUAD 4 PANEL (0.0115" OR 0.0135" THICK) ALUM. 3105	ALUMINUM
6	TRIPLE 4 PANEL (0.0115" OR 0.0135" THICK) ALUM. 3105	ALUMINUM
7	#15 x 1-3/4" TRIM NAIL	S.S.
7A	14GA. X 1-1/2" LONG FINISHING NAIL w/ 3/16" DIA. HEAD	S.S.
8	18" GA. X 1/4" SS STAPLE (w/ 7/8" MIN. EMBEDMENT)	STEEL
9	2" X 2" BATTEN STRIP (G=0.42 OR BETTER)	WOOD
10	APA B-C GROUP 1 EXT. 15/32" PLYWOOD OR BETTER	WOOD
11	0.097" DIA. T-NAIL (w/ 5/8" MIN. EMBEDMENT)	STEEL

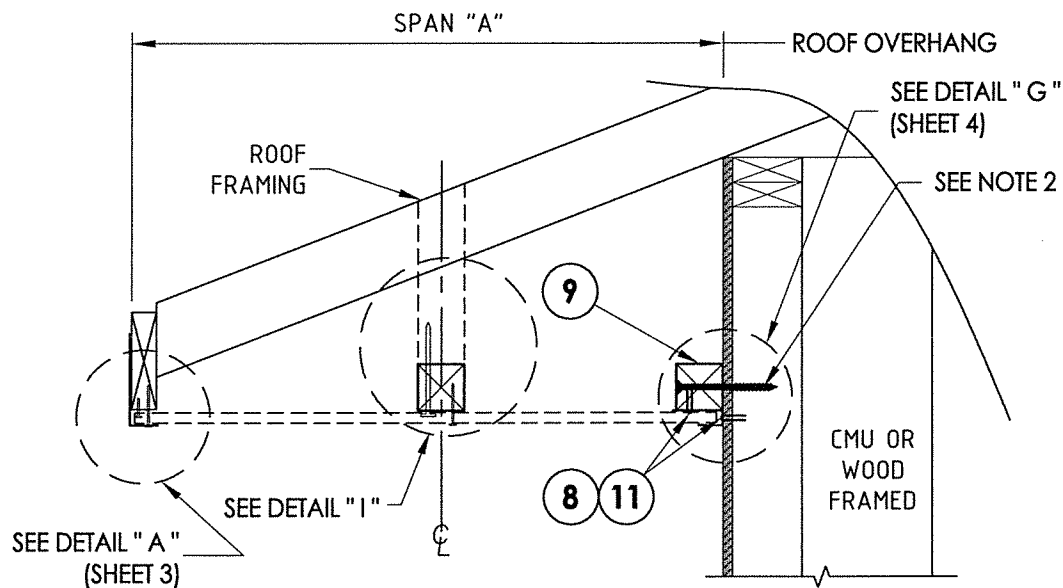


TWIN SPAN LENGTH w/CONTINUOUS BATTEN "A"	DESIGN PRESSURE (PSF)	
	POSITIVE	NEGATIVE
16"	+70.0	-70.0
18"	+66.5	-66.5
20"	+60.0	-60.0
22"	+54.5	-54.5
24"	+50.0	-50.0

- CONNECTOR NOTES:
1. WOOD FRAMING AND CONNECTIONS TO BE DESIGNED BY THE ARCHITECT OR ENGINEER OF RECORD
 2. 12d COMMON NAIL OR 3/16" ITW TAPCON CONCRETE SCREW (MIN. 1-1/4" EMBEDMENT) @ 24" ON CENTER

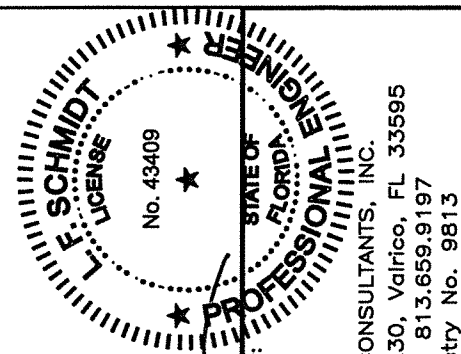


SIDE VIEW - DOUBLE SPAN w/BATTEN
(Shown w/ truss/framing cantilever)



SIDE VIEW - DOUBLE SPAN w/BATTEN
(Shown w/ truss/framing overhang)

- SUBSTRATE NOTES:
1. WOOD SUBSTRATE: G = 0.42 OR BETTER
 2. MASONRY SUBSTRATE: 3,000 PSI CONCRETE (ACI 301) OR HOLLOW BLOCK (ASTM C90).



Documents Prepared By:
Lyndon F. Schmidt
P.E. No. 43409

BUILDING CONSULTANTS, INC.
P.O. Box 230, Valrico, FL 33595
Phone No.: 813.659.9197
FBPE Registry No. 9813

PRODUCT: ALUMINUM SOFFIT
PART OR ASSEMBLY: SOFFIT DETAILS, DESIGN PRESSURES & BILL OF MATERIALS

NO.	DATE	REVISIONS
7	10/01/20	UPDATE TO 7TH ED. (2020) FBC
6	03/19/20	ADD ALTERNATE "F" CHANNEL
5	01/01/09	UPDATE TO 6TH ED. (2017) FBC
4	03/02/15	UPDATE TO 5TH ED. (2014) FBC
3	12/13/11	UPDATE FOR 2010 FBC

DATE: 1/9/09

SCALE: N.T.S.

DWG. BY: JK

CHK. BY: LFS

DRAWING NO.: FL-12019.1

SHEET 5 OF 5

Product Evaluation Report**Report No.:** FL-12019.1**Date:** October 6, 2020

Product Category	Sub Category	Manufacturer	Product Name
Panel Walls	Soffits	American Construction Metals 6938 N US Highway 41 Apollo Beach, FL 33572	"Triple 4" & "Quad 4" Aluminum "V-Groove" Soffit

Scope: This is a Product Evaluation report issued by R W Building Consultants, Inc. and Lyndon F. Schmidt, P.E. for American Construction Metals based on Rule Chapter No. 61G20-3, Method 1d of the State of Florida Product Approval, Department of Business & Professional Regulation.

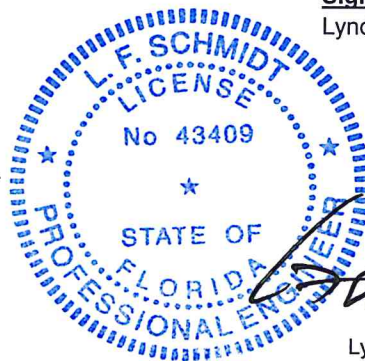
RW Building Consultants and Lyndon F. Schmidt, P.E. do not have nor will acquire financial interest in the company manufacturing or distributing the product or in any other entity involved in the approval process of the product named herein.

Limitations:

1. This product has been evaluated and is in compliance with the 7th Edition (2020) Florida Building Code (FBC) excluding the "High Velocity Hurricane Zone".
2. Product anchors shall be as listed and spaced as shown on details. Anchor embedment to base material shall be beyond wall dressing or stucco.
3. Site conditions not covered by drawing FL-12019.1 are subject to further engineering analysis.
4. Wood/CMU wall construction, by others, must be designed properly to receive loads from the soffit and/or 2" X 2" batten strips.
5. Aluminum soffits shall conform to the specification and labelling requirements of FBC Section 1709.10.
6. See drawing FL-12019.1 for size and design pressure limitations.

Supporting Documents:

- | | | | |
|---|---|---|--|
| 1. Test Report No.
TEL 01190073
TEL 01192924 | Test Standard
ASTM E330-02
ASTM E330-14 | Testing Laboratory
Testing Evaluation Lab., Inc.
Testing Evaluation Lab., Inc. | Signed by
Vivian K. Wright
Vivian K. Wright |
| 2. Drawing No.
No. FL-12019.1 | Prepared by
RW Building Consultants, Inc. (#9813) | Signed & Sealed by
Lyndon F. Schmidt, P.E. | |
| 3. Calculations
Anchoring | Prepared by
RW Building Consultants, Inc. (#9813) | Signed & Sealed by
Lyndon F. Schmidt, P.E. | |
| 4. Quality Assurance
Certificate of Participation issued by Keystone Certifications, Inc., certifying that American Construction Metals is manufacturing products within a quality assurance program that complies with ISO/IEC 17020 and Guide 53. | | | |



Lyndon F. Schmidt, P.E.
FL PE No. 43409
10/6/2020