



PROPOSED FIBER OPTIC NETWORK INSTALLATION
MICHAEL THOMAS HAIR DESIGN
 NAPLES, FL 34119
 SEC.: 05 TWP.: 49 RNG.:25

CONSULTANT



Alpine Communication Corp.
 595 N. Nova Rd., Suite 208
 Ormond Bch., FL 32174
 (386) 615-3316

PERMITTEE



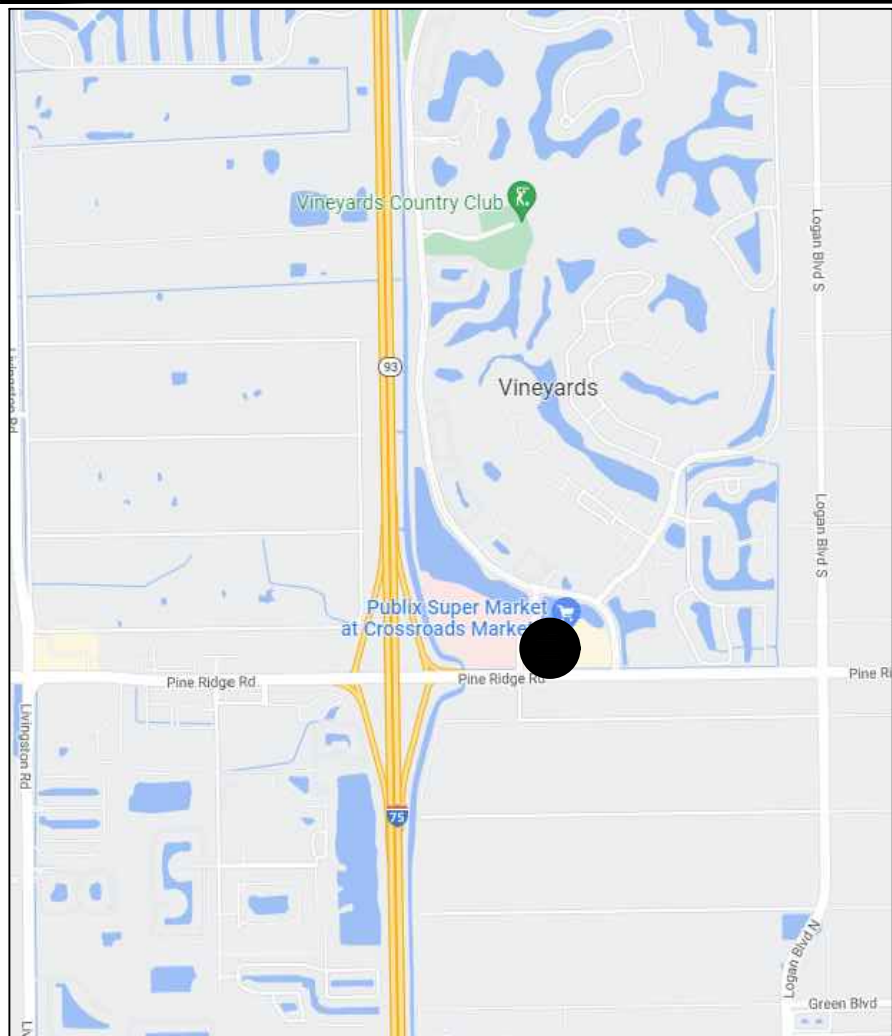
**6060 COLLIER
 BLVD, NAPLES, FL
 34114**

SPACE RESERVED FOR PROFESSIONAL SEALS
 INFORMATION OBTAINED FROM
 THE FOLLOWING:

- "SUMMERLIN PARK" PB-64 / P-72

FIELD WORK OBTAINED FROM
 THIS OFFICE.

LOCATION MAP



**Know what's below.
 Call before you dig.**



PERMITTING

JURISDICTION:

- COLLIER COUNTY
- PRIVATE AGREEMENT

INDEX OF SHEETS

- 001 OF 007 - COVER
- 002 OF 007 - OVERALL MAP
- 003 OF 007 - PROJECT SCHEDULE/ LEGEND
 CONTACT SHEET/ LINETYPES/
 NOTES
- 004 TO 006 OF 007 - PLAN/ PROFILE/
 SECTION PLAN DETAIL
- 007 OF 007 - HAND HOLE DETAIL

PROJECT CONTACTS

SUMMIT BROADBAND:

PROJECT MANAGER
 CONTACT:
 JAMES YEAKY
 JAMES.YEAKY@SUMMITBB.COM
 PHONE: (239) 571-5910

CONSTRUCTION MANAGER
 INFO:

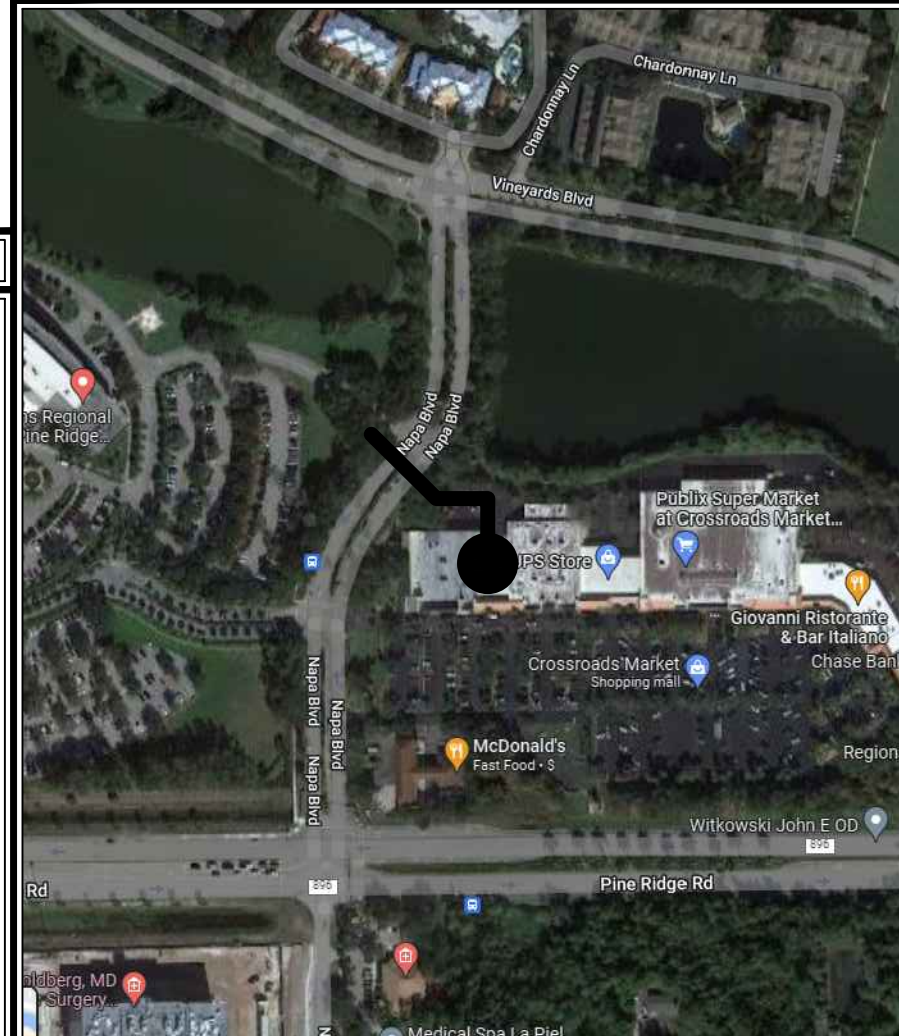
MARK BUSHONG
 MARK.BUSHONG@SUMMITBB.COM
 PHONE: (303) 921-4581

NAME VENDOR: ALPINE COMMUNICATION CORP.

ENGINEERING

& SURVEYING
 CONTACT:
 MARK MALLWITZ
 PHONE: (772) 828-8945
 EMAIL: MMALLWITZ@ALPINECC.US

VICINITY MAP



REVISIONS	NO.	DATE	DESCRIPTION	BY

DRAWN BY: A.C.C/ MS/J.E.
 CHECKED BY: MARK MALLWITZ
 DRAWING DATE: 11/13/22

SITE NUMBER

SITE NAME

MICHEAL THOMAS HAIR DESIGN

BUSINESS UNIT NUMBER

SITE ADDRESS

6025 PINE RIDGE RD
 NAPLES
 COLLIER
 FL 34119 - USA

SHEET TITLE

COVER

SHEET NUMBER

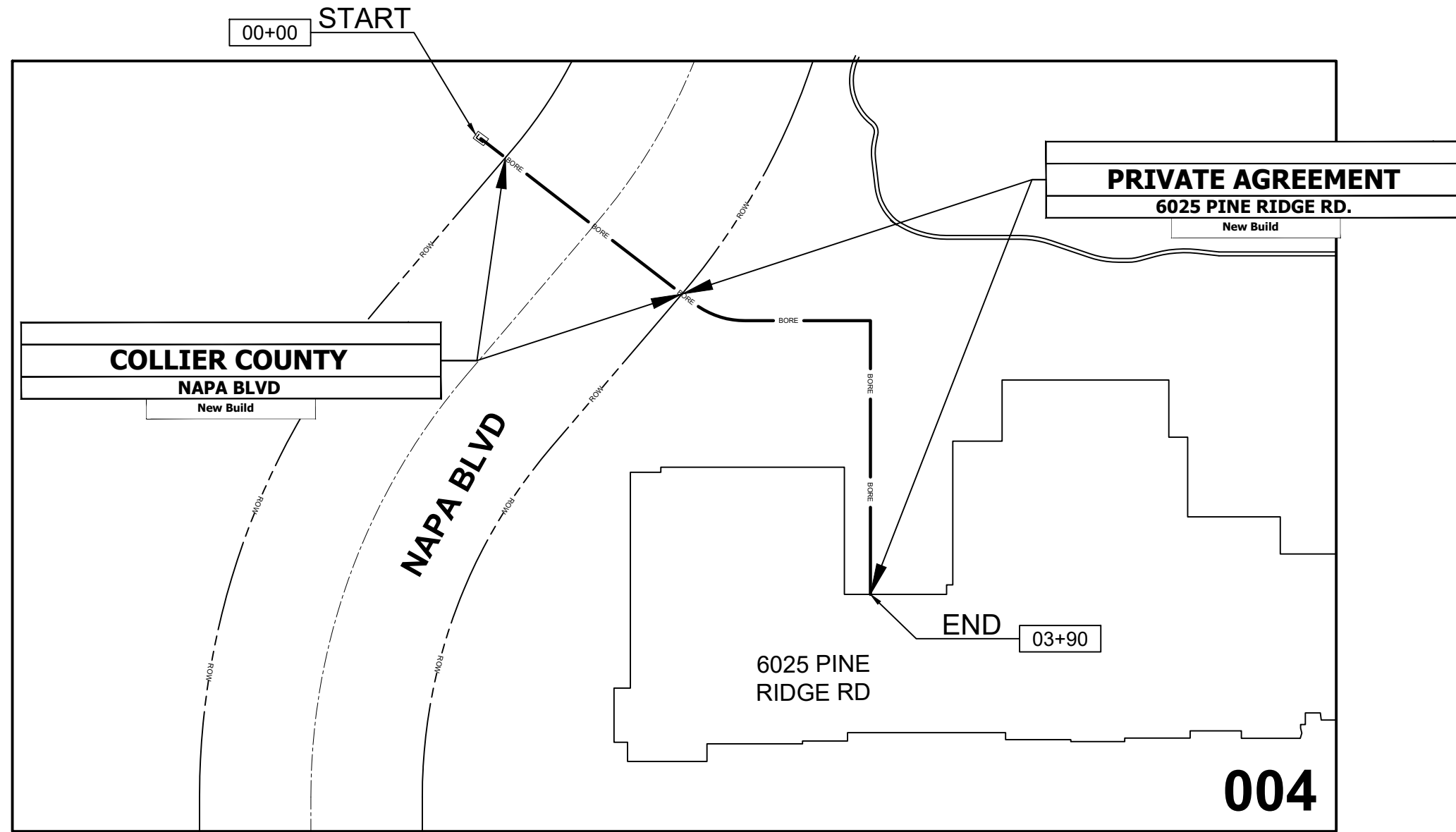
COVER, LOCATION MAP, VICINITY MAP, PERMITTING, INDEX OF SHEET, PROJECT CONTACT

SCALE:
 NTS 001

001 OF 007

ENG-PLN-10050 REV(-) DATE:6/17/14

OVERALL MAP



Alpine Communication Corp.
595 N. Nova Rd., Suite 208
Ormond Bch., FL 32174
(386) 615-3316

PERMITTEE



6060 COLLIER
BLVD, NAPLES, FL
34114

SPACE RESERVED FOR PROFESSIONAL SEALS

REVISIONS NO.	DATE	DESCRIPTION	BY				

DRAWN BY: A.C.C/ MS/J.E.
CHECKED BY: MARK MALLWITZ
DRAWING DATE: 11/13/22

SITE NUMBER

SITE NAME

MICHEAL THOMAS HAIR DESIGN

BUSINESS UNIT NUMBER

SITE ADDRESS

6025 PINE RIDGE RD
NAPLES
COLLIER
FL 34119 - USA

SHEET TITLE

OVERALL MAP

SHEET NUMBER

SCALE:
NTS 002

002 OF 007

OVERALL MAP

ENG-PLN-10050 REV(-) DATE:6/17/14

PROJECT QUANTITIES

OSP UNDERGROUND ROUTE

DESCRIPTION	QUANTITY	UNIT
(3) - 1.25" HDPE	390	LF
(1) - 1.5" HDPE	-	LF
DIRECTIONAL BORE	390	LF
OPEN CUT / TRENCH	-	LF
12 GAUGE TRACER WIRE	390	LF
24"X36"X30" HANDHOLE	1	EA
30"X48"X36" HANDHOLE	-	EA

OSP AERIAL ROUTE

DESCRIPTION	QUANTITY	UNIT
POLE COUNT	-	EA
ANCHOR / DOWN GUY	-	EA
BONDS	-	EA
AERIAL STRAND	-	LF
AERIAL FIBER	-	LF
AERIAL RISER	-	LF
AERIAL RISER CT	-	EA

RESTORATION QUANTITY (TOTAL JOB)

DESCRIPTION	QUANTITY	UNIT
ASPHALT	-	SF.
CONCRETE	-	SF.
BRICKS	-	SF.
SOD	25	SF.

FIBER PLACEMENT & SPLICING

DESCRIPTION	QUANTITY	UNIT
FIBER SPLICE / TEST	-	EA
450D SPLICE ENCLOSURE	-	EA
600D SPLICE ENCLOSURE	-	EA
## CT FIBER OPTIC CABLE	490	LF
NEW 1-DROP CABLE	-	LF

LEGEND

SYMBOL	LEGEND	SYMBOL	LEGEND
○	TELEPHONE POLE	⊗	STREET LIGHT POLE (TYP.)
X	WOOD POLE	⊕	TRAFFIC POLE W/ MAST ARM
⊗	JOINT POLE	⊞	RAILROAD SIGN PED CROSSING SIGNAL
⊙	STEEL POLE	⊞	RAILROAD GATE
⊙	CONCRETE POLE	⊞	RAILROAD CROSSING
⊙	POLE - TEMPORARY	⊞	FIRE HYDRANT
⊙	TRAFFIC SIGNAL POLE	⊞	SEWER CAP
⊙	LIGHT POLE	⊞	SAN SEWER MANHOLE SAN SEWER HANDHOLE
X	POWER POLE	⊞	STORM SEWER MANHOLE STORM SEWER HANDHOLE
⊙	AERIAL SLACK (TYP.)	⊞	STORM DRAIN CATCH BASIN INLET DRAIN INLET CONCRETE SPILLWAY
⊞	ANCHOR	⊞	EXISTING SUMMIT FIBER VAULT
153'	STRAND FOOTAGE	⊞	17X30 VAULT 24X36 VAULT 30X48 VAULT 36X48 VAULT 48X48 VAULT
⊞	POWER MANHOLE	⊞	BORE PIT
P	POWER PED	⊞	FIBER MANHOLE
E	POWER VAULT	⊞	TELEPHONE MANHOLE
⊞	TELCO MANHOLE	⊞	TELEPHONE VAULT
T	TELCO PED	⊞	FIBER VAULT (BY OTHER)
T	TELCO VAULT	⊞	STREET NAME
⊞	TRAFFIC SIGNAL HANDHOLE	⊞	NORTH ARROW
⊞	TRAFFIC SIGNAL CABINET	⊞	
⊞	ABOVE GROUND PEDESTAL	⊞	
⊞	UNKNOWN VAULT	⊞	
*	CONIFEROUS TREE	⊞	
○	BRUSH	⊞	

LINETYPES

— A — A — A — A —	OVERHEAD FIBER OPTIC LINE
— FOC — FOC —	OTHER FIBER OPTIC CABLE
— UG — UG —	EXISTING U.G.
— E — E — E — E —	POWER U.G.
— TRF — TRF —	TRAFFIC
— T — T — T — T —	COMMUNICATIONS
— G — G — G — G —	GAS MAIN
— W — W — W — W —	WATER MAIN
— S — S — S — S —	SANITARY SEWER GRAVITY MAIN
— FM — FM — FM — FM —	SANITARY SEWER FORCE MAIN
— SS — SS — SS — SS —	STORM SEWER
— RW — RW — RW — RW —	RECLAIM WATER
— SL — SL —	STREET LIGHT
— TV —	CATV BURIED
— G — G — G — G —	GUARDRAIL
— F — F — F — F —	FENCE
— SW — SW — SW — SW —	SIDEWALK
— EOP — EOP —	EDGE OF PAVEMENT
— BOC —	BOC
— ROW —	RIGHT OF WAY
— E —	EASEMENT
— CL —	CENTER LINE
— B —	BUILDING
— PL — PL —	PROPERTY LINE
	RAILROAD

CONTACT SHEET

**SUMMIT BROADBAND
NETWORK OPERATION CENTER (NOC)**
(866) 553 - 4237

CONSTRUCTION CONTRACTOR

NAME OF FIRM:
PROJECT COORDINATOR:
PHONE:
EMAIL:
ADDRESS:

CONTRACTS

CONTRACT COORDINATOR:

PROJECT INFORMATION

PROJECT NAME: MICHAEL THOMAS HAIR DESIGN
CV NUMBER:

UTILITIES

SUNSHINE 811
NUMBER: 811 OR (800) 432-4770

FIELD OPERATIONS

INSIDE PLANT ENGINEERING:
PROJECT MANAGER: JAMES YEAKEY
OUTSIDE PLANT ENGINEERING:

LOCAL UTILITIES

- CONTRACTOR TO FIELD VERIFY UTILITIES PRIOR TO CONSTRUCTION

CAD CONTRACTOR

NAME OF FIRM: ALPINE COMMUNICATIONS CORP.
PROJECT MANAGER: MARK MALLWITZ
PHONE: (772) 828-8945
EMAIL: MMALLWITZ@ALPINECC.US

CITY GOVERNMENT

- COLLIER COUNTY

CONSTRUCTION NOTES

TYPICAL UNDERGROUND CONSTRUCTION:

- RESTORE ALL SURFACES TO EQUAL OR BETTER CONDITION.
- VERIFY ALL MEASUREMENTS AND DISTANCES.
- MAINTAIN MINIMUM 12" SEPARATION BETWEEN PROPOSED SUMMIT BROADBAND DUCTS & EXISTING UTILITIES.
- NO PROPOSED RUNNING LINE CHANGES ARE TO BE DONE WITHOUT SUMMIT BROADBAND OSPE APPROVAL.
- MAINTAIN A MIN BENDING RADIUS OF 5' ON ALL DUCT CONFIGURATION.

FIELD NOTES:

- CONTRACTOR TO ADJUST BORE DEPTH IN FIELD, IF REQUIRED DUE TO FIELD CONDITIONS.
- CONTRACTOR TO MAINTAIN ALL MIN. DEPTHS AND MIN. CLEARANCES REQUIRED.

FOR CONSTRUCTION:

- EXTREME CAUTION TO BE TAKEN TO CONTAIN SLURRY AROUND WORK AREAS NEAR WETLANDS TO AVOID ANY WATER QUALITY ISSUES!
- ALL UTILITY LOCATIONS ARE APPROXIMATE AND MUST BE FIELD VERIFIED BEFORE DIGGING, CALL SUNSHINE 811 (800-432-4770) FOR UTILITY LOCATES

CONSULTANT



Alpine Communication Corp.
595 N. Nova Rd., Suite 208
Ormond Bch., FL 32174
(386) 615-3316

PERMITTEE



**6060 COLLIER
BLVD, NAPLES, FL
34114**

SPACE RESERVED FOR PROFESSIONAL SEALS

NO.	DATE	DESCRIPTION	BY

DRAWN BY: **A.C.C/ MS/J.E.**
CHECKED BY: **MARK MALLWITZ**
DRAWING DATE: **11/13/22**

SITE NUMBER

SITE NAME

MICHEAL THOMAS HAIR DESIGN

BUSINESS UNIT NUMBER

SITE ADDRESS

6025 PINE RIDGE RD
NAPLES
COLLIER
FL 34119 - USA

SHEET TITLE

PROJECT SCHEDULE

SHEET NUMBER

PROJECT SCHEDULE

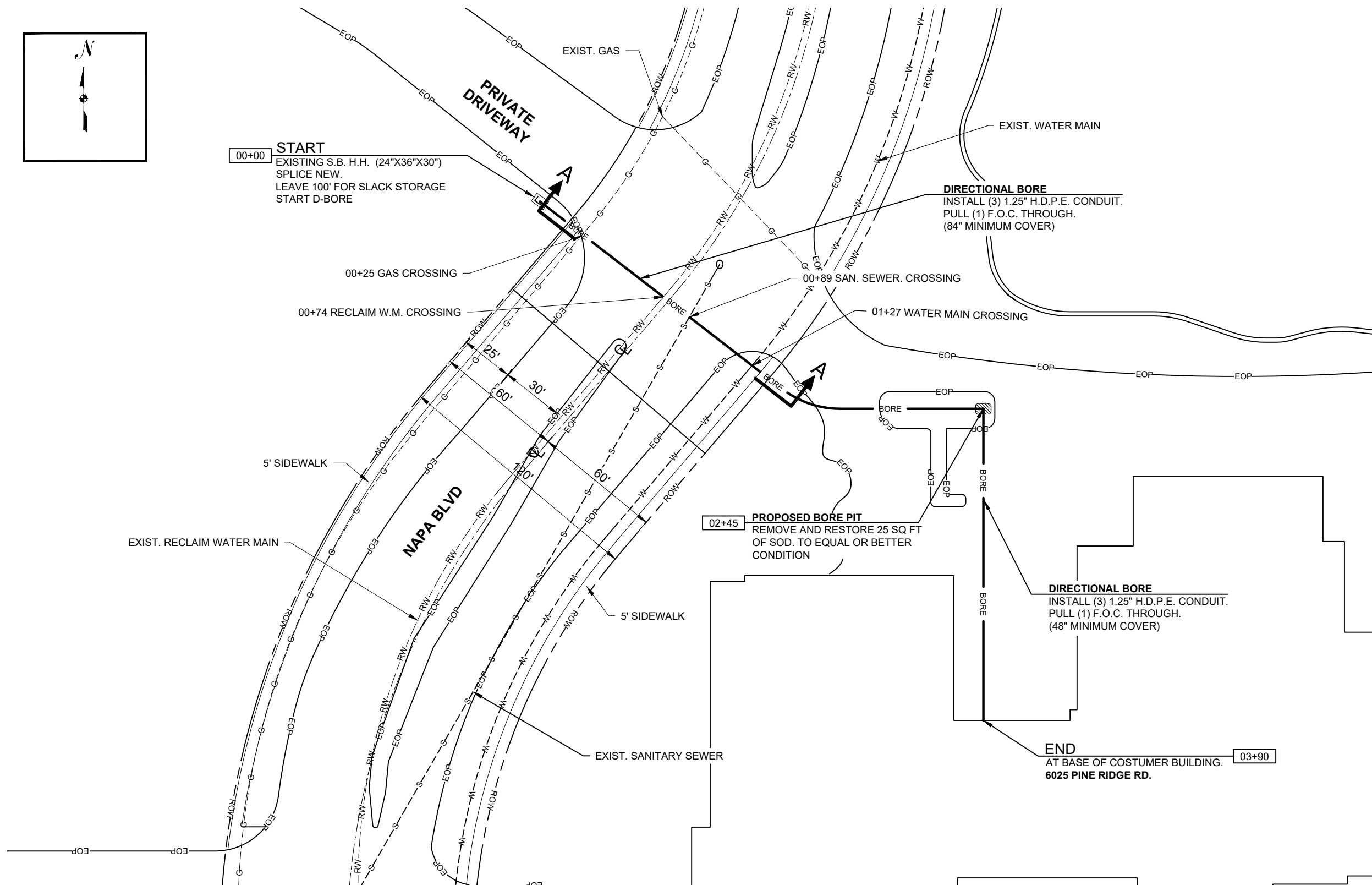
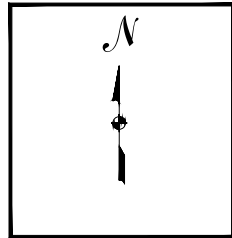
PLOT DATE: 11/13/22 FILE NAME: MICHAEL THOMAS HAIR DESIGN

SCALE:
NTS

003

003 OF 007

ENG-PLN-10050 REV(-) DATE:6/17/14



CONSULTANT

Alpine Communication Corp.
595 N. Nova Rd., Suite 208
Ormond Bch., FL 32174
(386) 615-3316

PERMITTEE

summit
BROADBAND

**6060 COLLIER
BLVD, NAPLES, FL
34114**

SPACE RESERVED FOR PROFESSIONAL SEALS

REVISIONS NO.	DATE	DESCRIPTION	BY	
			DATE	DESCRIPTION

DRAWN BY: A.C.C/ MS/J.E.
CHECKED BY: MARK MALLWITZ
DRAWING DATE: 11/13/22

SITE NUMBER

SITE NAME

MICHEAL THOMAS HAIR DESIGN

BUSINESS UNIT NUMBER

SITE ADDRESS

6025 PINE RIDGE RD
NAPLES
COLLIER
FL 34119 - USA

SHEET TITLE

PLAN

SHEET NUMBER

SCALE:
1" = 50'

004

004 OF 007

ENG-PLN-10050 REV(-) DATE:6/17/14

PLAN

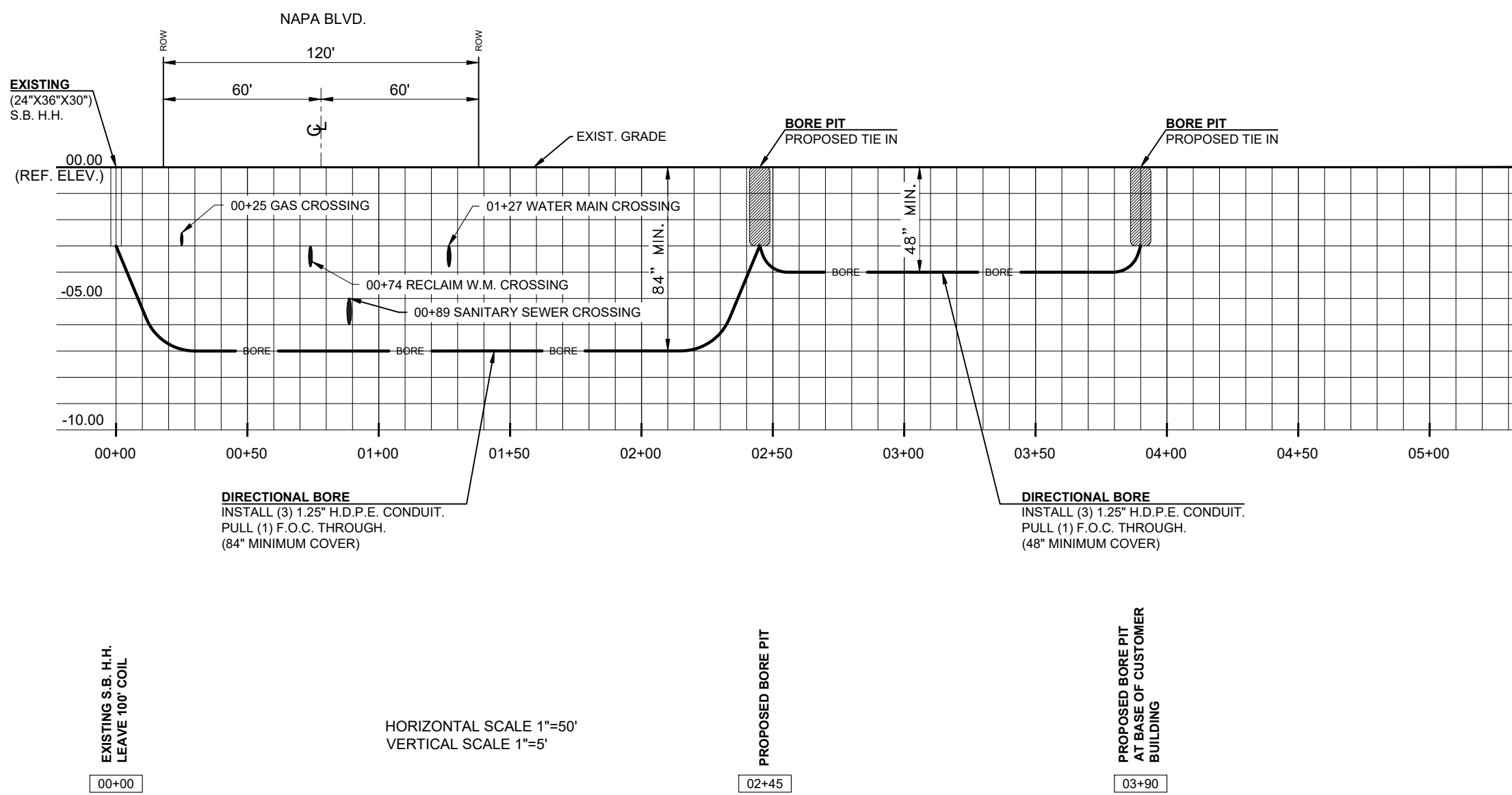


Alpine Communication Corp.
595 N. Nova Rd., Suite 208
Ormond Bch., FL 32174
(386) 615-3316



**6060 COLLIER
BLVD, NAPLES, FL
34114**

SPACE RESERVED FOR PROFESSIONAL SEALS



REVISIONS NO.	DATE	DESCRIPTION	BY

DRAWN BY: A.C.C/ MS/J.E.
CHECKED BY: MARK MALLWITZ
DRAWING DATE: 11/13/22

SITE NUMBER

SITE NAME

MICHAEL THOMAS HAIR DESIGN

BUSINESS UNIT NUMBER

SITE ADDRESS

6025 PINE RIDGE RD
NAPLES
COLLIER
FL 34119 - USA

SHEET TITLE

PROFILE

SHEET NUMBER

PROFILE

SCALE:
1" = 50'

005

005 OF 007

CONSULTANT



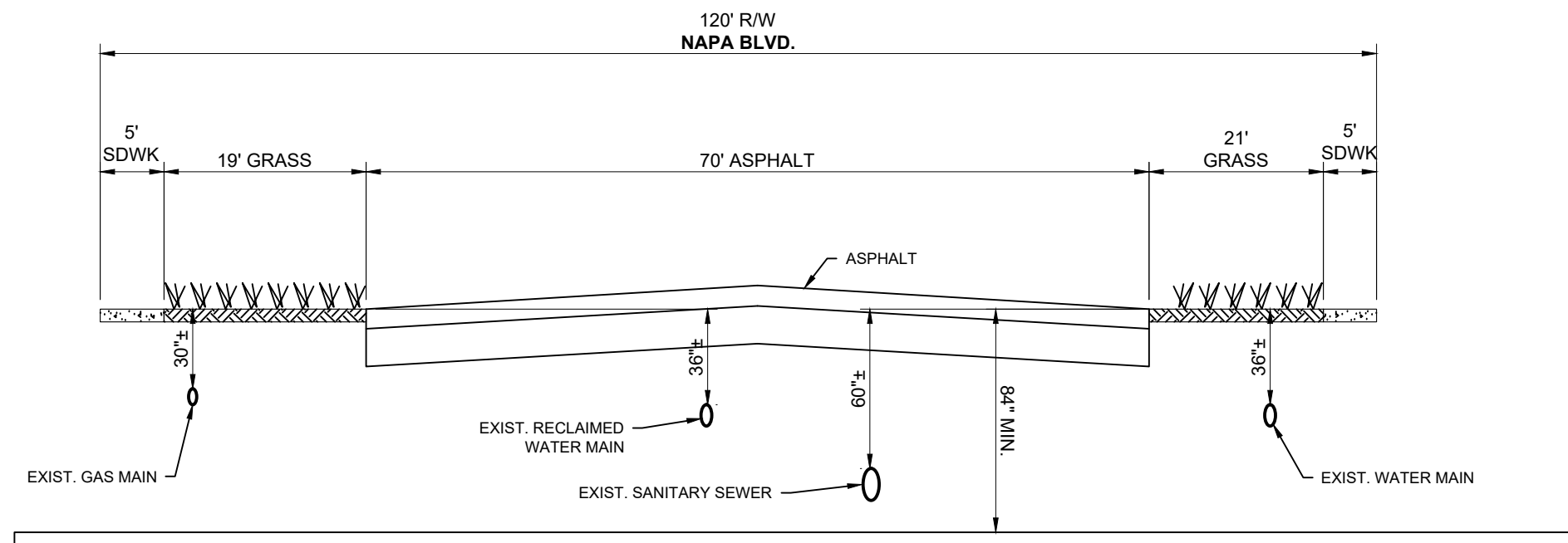
Alpine Communication Corp.
595 N. Nova Rd., Suite 208
Ormond Bch., FL 32174
(386) 615-3316

PERMITTEE



6060 COLLIER
BLVD, NAPLES, FL
34114

SPACE RESERVED FOR PROFESSIONAL SEALS



DIRECTIONAL BORE
INSTALL (3) 1.25" H.D.P.E. CONDUIT.
PULL (1) F.O.C. THROUGH.
(84" MINIMUM COVER)

**SECTION A-A N.T.S.
FACING NORTHEAST**

NOTES: CONTRACTOR TO MAINTAIN 12" MIN. VERTICAL
CLEARANCE TO ALL EXIST. UTILITIES.

REVISIONS	NO.	DATE	DESCRIPTION	BY

DRAWN BY: A.C.C/ MS/J.E.
CHECKED BY: MARK MALLWITZ
DRAWING DATE: 11/13/22

SITE NUMBER

SITE NAME

MICHEAL THOMAS HAIR DESIGN

BUSINESS UNIT NUMBER

SITE ADDRESS

6025 PINE RIDGE RD
NAPLES
COLLIER
FL 34119 - USA

SHEET TITLE

SECTION DETAIL

SHEET NUMBER

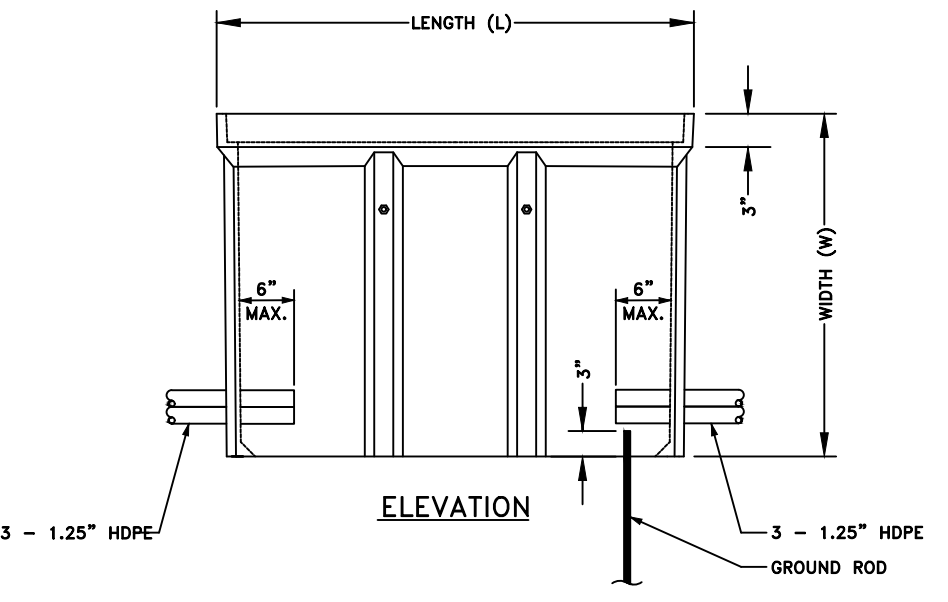
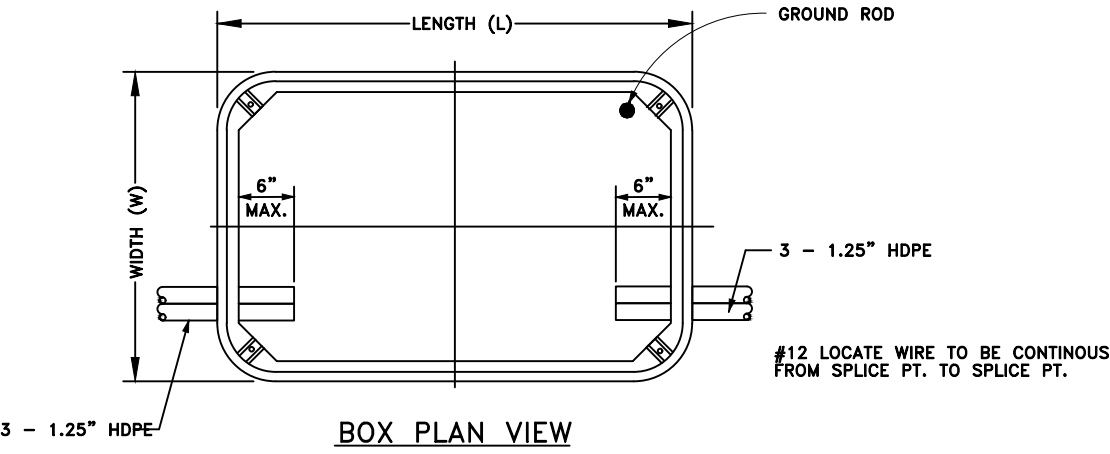
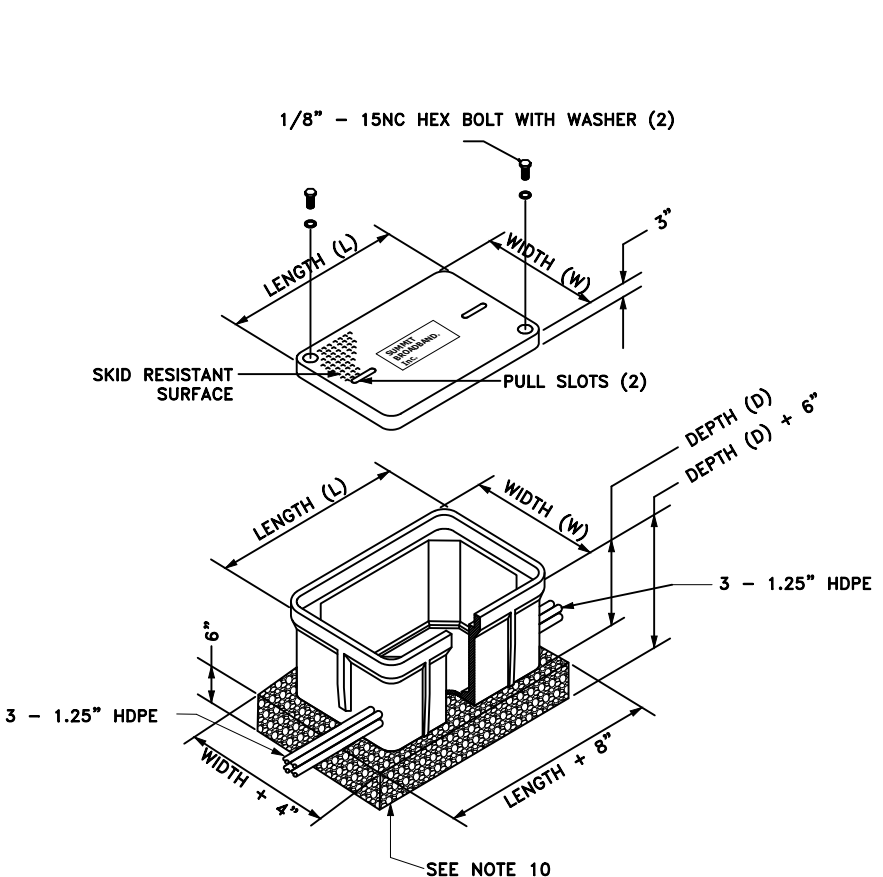
SECTION DETAIL PLAN

SCALE:
N.T.S. 006

ENG-PLN-10050 REV(-) DATE:6/17/14

CONSTRUCTION TYPICALS

TYPICAL HAND HOLE INSTALLATION



HANDHOLE LOADING	
TIER 15 =	15,000 LBS.
TIER 22 =	22,500 LBS.
H-20 =	40,000 LBS.

- NOTES:**
- HANDHOLES TO BE CONSTRUCTED TO TIER 15 OR HIGHER SPECIFICATIONS.
 - EXCAVATE HOLE 6"-8" DEEPER THAN THE HANDHOLE TO ALLOW FOR A 6" (MINIMUM) GRAVEL BASE DEPTH.
 - GRAVEL BASE SHALL EXTEND PAST SIDEWALLS OF HANDHOLE.
 - THE GRAVEL ACTS AS A SUPPORT BASE AND A FRENCH DRAIN.
 - HANDHOLE TO BE LEVEL GRADE.
 - INTERNAL BRACING DURING BACKFILLING WILL INSURE MINIMAL SIDEWALL DEFLECTION.
 - HANDHOLES MUST BE STABILIZED WITH 95% COMPACTION.
 - BACKFILL AND RESTORATION TO BE COMPRISED OF "STREET CUT AND EXCAVATION REPAIR STANDARDS" AND MANUFACTURE RECOMMENDATIONS.
 - INSTALL 5/8"x8' LENGTH COPPER CLAD STEEL CENTER GROUND ROD.
 - ALL INNERDUCTS WILL BE PLUGGED WITH APPROPRIATE DUCT PLUG.
 - FASTEN ALL STAINLESS STEEL PENTA BOLTS FLUSH TO COVER.
 - INSTALL APPROPRIATE MARKER POLE (W/FINK PLATE).
 - CONNECT GROUND AND LOCATE WIRES PER SPECIFICATIONS

CONSULTANT

Alpine Communication Corp.
595 N. Nova Rd., Suite 208
Ormond Bch., FL 32174
(386) 615-3316

PERMITTEE

6060 COLLIER BLVD, NAPLES, FL 34114

SPACE RESERVED FOR PROFESSIONAL SEALS

NO.	DATE	DESCRIPTION	BY

DRAWN BY: A.C.C/ MS/J.E.
CHECKED BY: MARK MALLWITZ
DRAWING DATE: 11/13/22

SITE NUMBER _____

SITE NAME _____

MICHAEL THOMAS HAIR DESIGN

BUSINESS UNIT NUMBER _____

SITE ADDRESS _____

6025 PINE RIDGE RD
NAPLES
COLLIER
FL 34119 - USA

SHEET TITLE _____

HAND HOLE DETAIL

SHEET NUMBER _____

ENG-PLN-10050 REV(-) DATE:6/17/14

HAND HOLE DETAIL